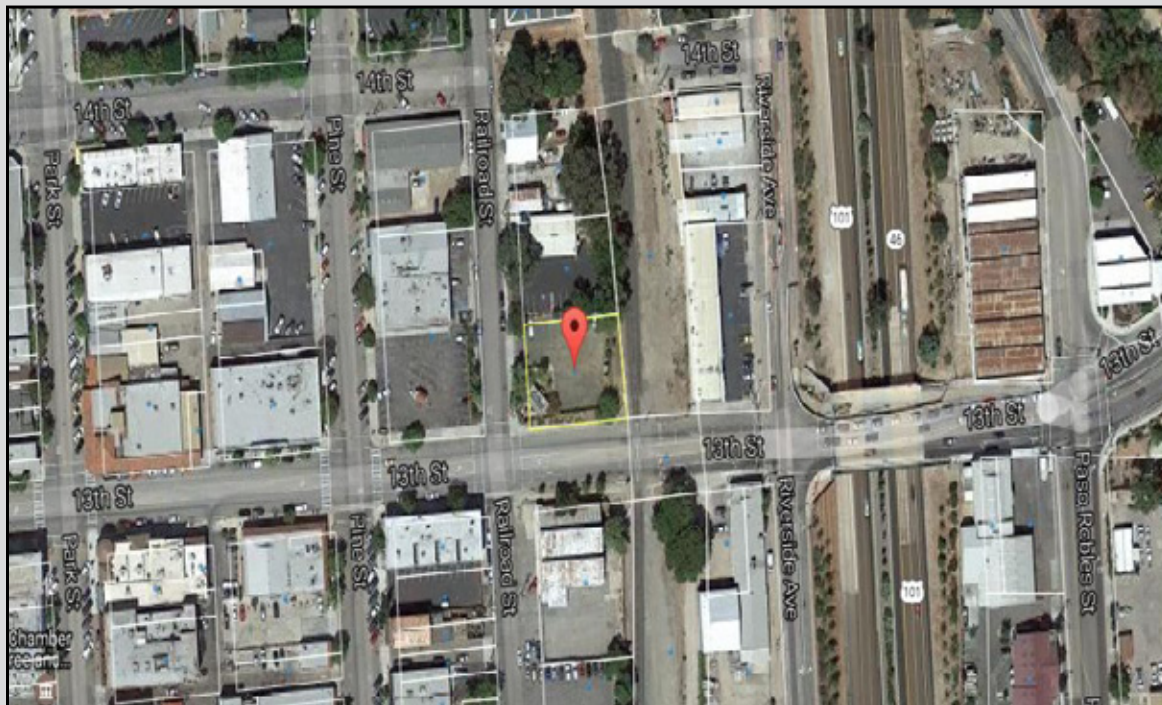


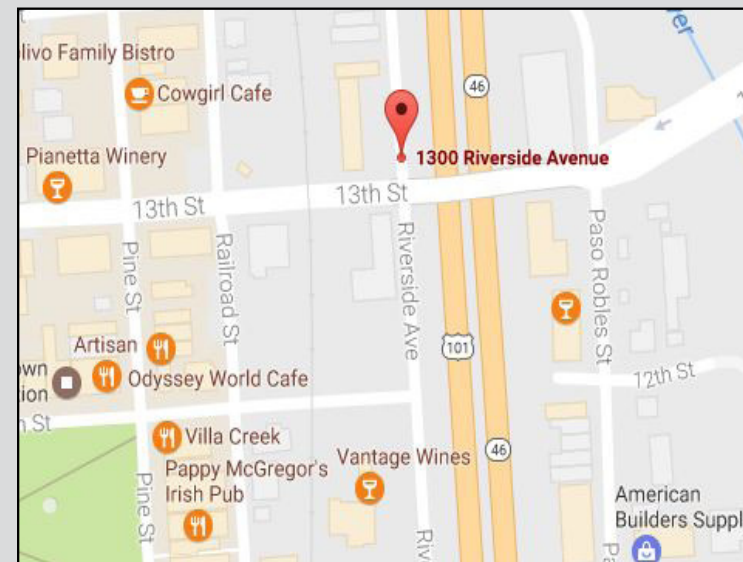
FOR SALE - Prime Corner

1300 Railroad Street
Paso Robles, CA



Property Details:

- +/- 13,291 SF Lot
- Current Tenant is Month to Month
- Zoned TC1 (Town Centre)
- APNs: 009-047-004



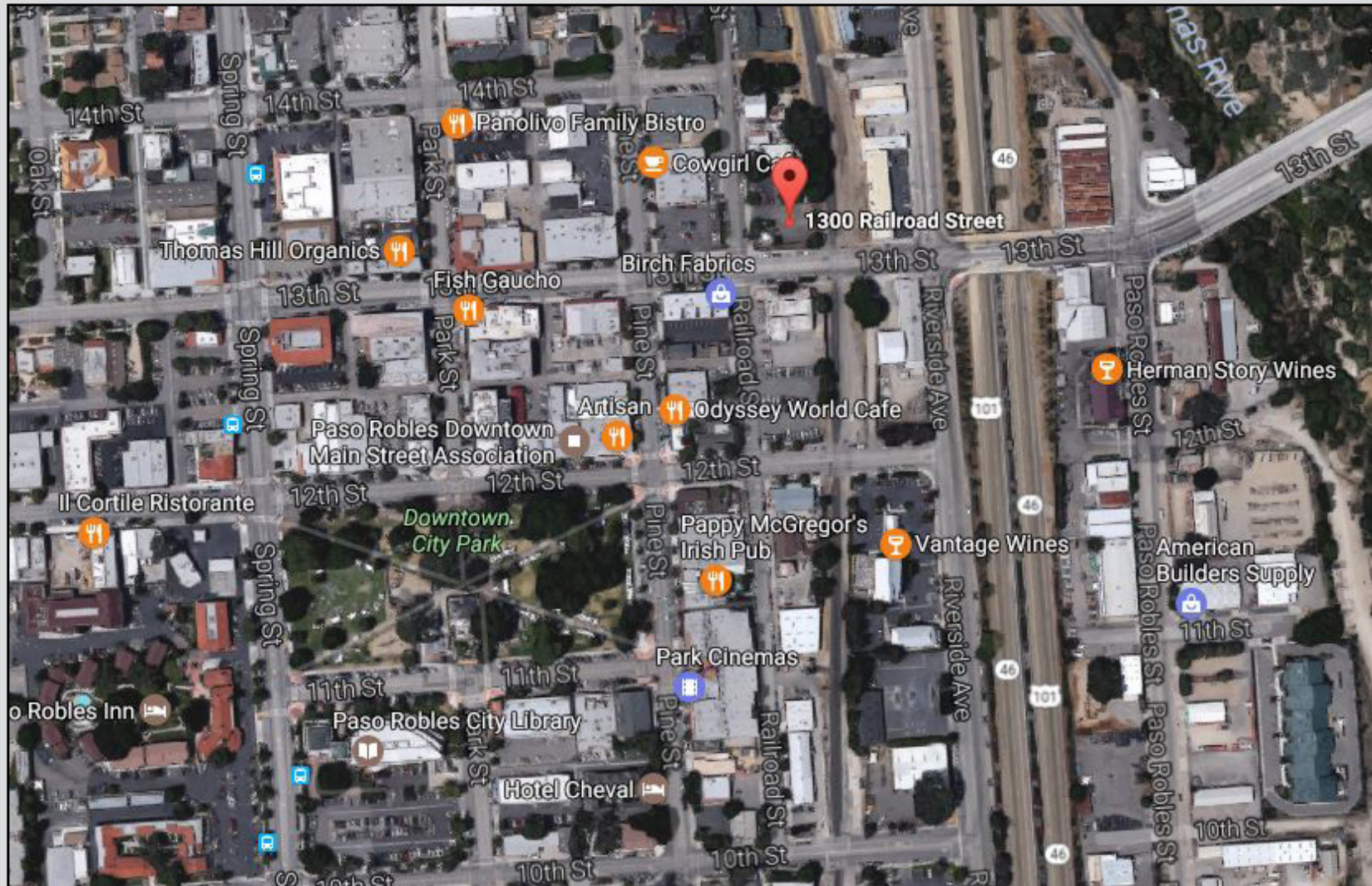
+/- 13,291 SF Lot. Great investment opportunity. Current tenant is on a month to month lease. Located on the high traffic corner of Railroad and 13th Streets. Downtown Paso Robles.

Asking \$449,900.00

504 First St, Ste A, Paso Robles, CA 93446
Office: (805) 237-4040 • Fax: (805) 237-4041
www.PacificaPasoRobles.com
BRE# 01382568

Bryan Beckham
bryan@pacificre.com
BRE# 01072713

Newlin Hastings
newlin@pacificre.com
BRE# 00784461



504 First St, Ste A, Paso Robles, CA 93446
 Office: (805) 237-4040 • Fax: (805) 237-4041
www.PacificaPasoRobles.com
 BRE# 01382568

Bryan Beckham
bryan@pacificre.com
 BRE# 01072713

Newlin Hastings
newlinpacificre.com
 BRE# 00784461